

FOR LEASE > OFFICE SPACE



Herndon Armstrong Professional Center

NWC HERNDON & ARMSTRONG AVENUES, CLOVIS, CALIFORNIA



Property Summary > Office Space

Located in the northwest corner of Herndon and Armstrong Avenues, Clovis, California. Project is developed into separate parcels and some buildings can be sold on an individual basis.

Property Features

- > Available Space: Ranging from 1,223 RSF to 5,000 RSF in ten (10) buildings.
One Sublease Space Available - 1,223 RSF
- > Lease Rate: \$1.65 PSF, NNN.
(Owner will consider sale of buildings.)
- > Lease Term: Five to Ten Year Term.
- > Tenant Improvement Allowance: \$40.00 per usable square foot.
- > Signage: Exterior building fascia signage available.

- Excellent Corner Visibility.
- New Signalized Intersection.
- Close to Kaiser Permanente & Clovis Community Hospital.
- Restaurants, Banks & Retail Shopping Services Nearby.
- Close to Freeway 168/Fowler and Freeway 168/Temperance Interchanges.

AGENT: BOBBY FENA, SIOR
559 221 1271 | EXT. 436
FRESNO, CA
bobby.fena@colliers.com
DRE #00590204

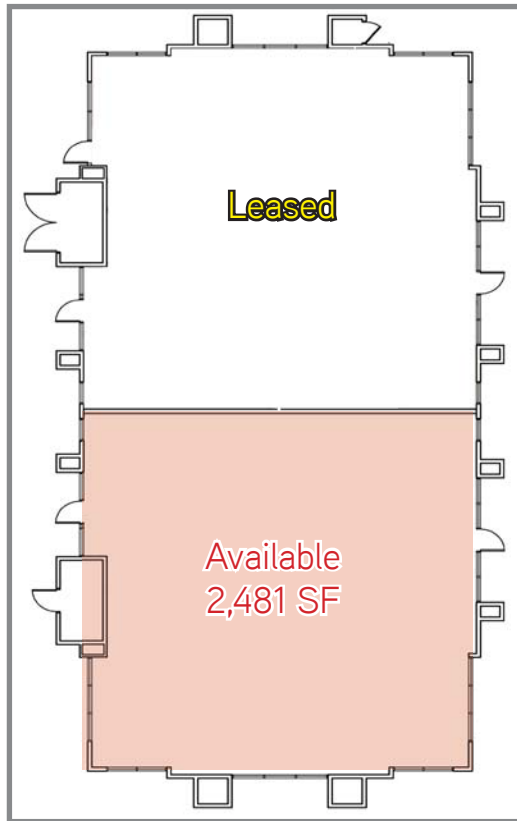
AGENT: MICHAEL SCHUH
559 221 1271 | EXT. 449
FRESNO, CA
michael.schuh@colliers.com
DRE #01195311

COLLIERS INTERNATIONAL
7485 N. Palm Avenue, #110
Fresno, CA 93711
www.colliers.com/fresno

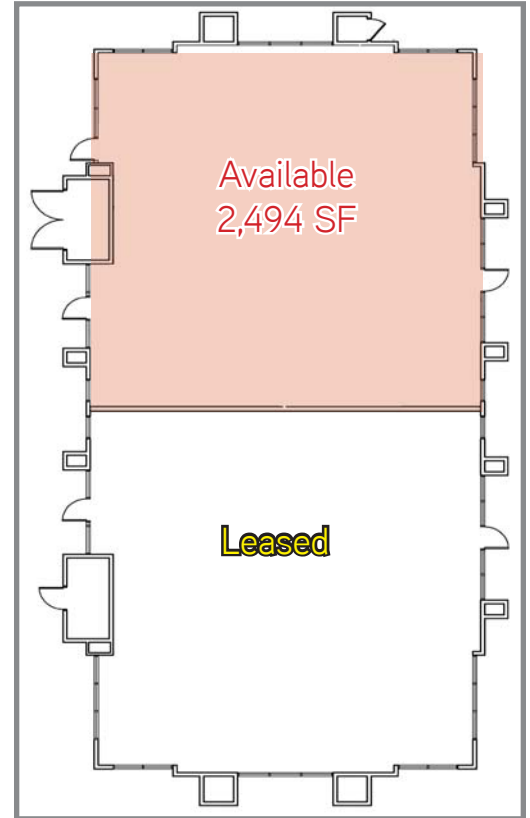
Herndon Armstrong Professional Center > Floor Plans

NORTHWEST CORNER HERNDON & ARMSTRONG AVENUES, CLOVIS, CALIFORNIA

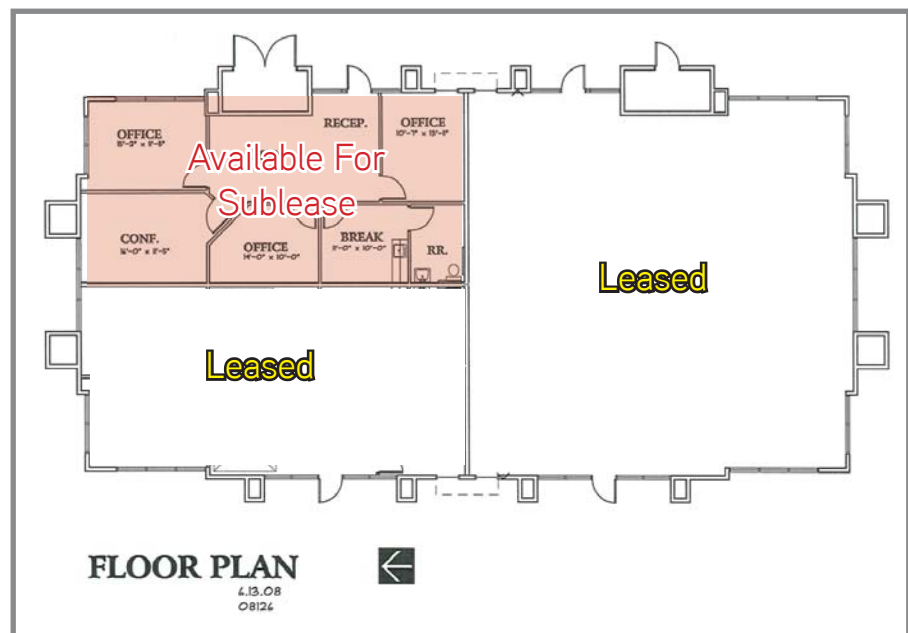
ADDRESS	RSF	LEASE RATE
2121 Herndon Avenue	2,481	\$1.65 PSF, NNN
2127 Herndon Avenue	2,494	\$1.65 PSF, NNN
2131 Herndon Avenue	5,000	\$1.65 PSF, NNN
2137 Herndon Avenue	5,000	\$1.65 PSF, NNN
2147 Herndon Avenue, #104	1,223 (Sublease)	\$1.47 PSF, NNN



2121 Herndon Avenue



2127 Herndon Avenue



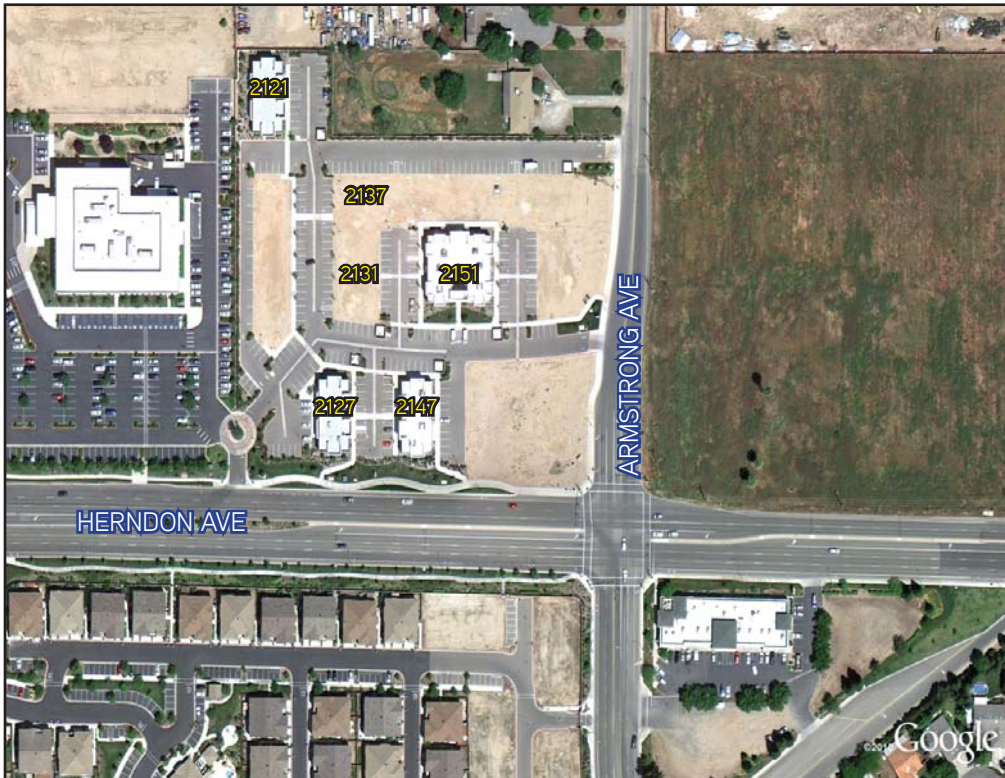
2147 Herndon Avenue

Tenant List

- David C. Freeman, DDS
- State Farm Insurance - Gregg Watson
- Dry Creek Medical Group
- Dry Creek Urgent Care
- Weight Away Medical Clinic
- PURE Wellnes Center
- Zinc Financial
- Clovis Insurance Agency
- Law Offices of Michael Elder

Herndon Armstrong Professional Center > Site Plan/Aerial

NORTHWEST CORNER HERNDON & ARMSTRONG AVENUES, CLOVIS, CALIFORNIA



Contact Us

AGENT: BOBBY FENA, SIOR
559 221 1271 | EXT. 436
bobby.fena@colliers.com
DRE #00590204

AGENT: MICHAEL SCHUH
559 221 1271 | EXT. 449
michael.schuh@colliers.com
DRE #01195311

COLLIERS INTERNATIONAL
7485 N. Palm Avenue, #110
Fresno, CA 93711
www.colliers.com/fresno

All information, representation and projections shown herein are based on information supplied by sources deemed to be reliable; however, they are not warranted by Colliers International and are subject to change without notice.

